



## Instruction Manual

### go2MONITOR Result Viewer Setup

Product Version v24.1

December 21, 2023

## Imprint

PROCITEC GmbH  
Rastatter Straße 41  
D-75179 Pforzheim  
Germany

Phone: +49 7231 15561 0  
Fax: +49 7231 15561 11  
Email: [service@procitec.com](mailto:service@procitec.com)  
Web: [www.procitec.com](http://www.procitec.com)

Authorised Representative:  
Dipl.-Ing. (FH) Dipl.-Inf. (FH) Jens Heyen

Registration Court:  
HRB 504702 Amtsgericht Mannheim  
Tax ID:  
DE 203 881 534

Document ID:  
PROCITEC-IMA-ResultViewerSetup\_E-7f142bd669

All product names mentioned in this text are trademarks or registered trademarks of the respective title-holders.

© 2023 PROCITEC GmbH

All content, texts, graphics and images are copy-righted by PROCITEC GmbH, if not stated otherwise. Reproduction in any form, the rights of translation, processing, duplication, modification, use and distribution by use of electronic systems in whole or part are strictly prohibited.

Subject to technical modifications.

# Contents

<b>1. Standalone Result Viewer</b> . . . . .	<b>1</b>
1.1. Task . . . . .	1
1.2. Corresponding Files . . . . .	1
1.3. How to Read this Manual . . . . .	2
<b>2. Steps</b> . . . . .	<b>3</b>
2.1. Share the Result Folder . . . . .	3
2.2. Allow PostgreSQL Database to accept connections from Remote Hosts . . . . .	3
2.3. Configure the Firewall . . . . .	3
2.4. Configure ResultViewer on Remote Site . . . . .	4
<b>A. Support</b> . . . . .	<b>5</b>



# 1. Standalone Result Viewer

The ResultViewer is the application that allows the go2MONITOR user to access the result database to display, filter and process recorded result and metadata. It is usually started within go2MONITOR. Beside the integrated version of ResultViewer there is a standalone version that can be used remotely from another workstation. The differences between the two versions are described in the user manual. This document describes the process to configure it.

## 1.1. Task

An Integrator or Administrator of go2MONITOR wants to make the Result Viewer available in parallel to go2MONITOR. The Result Viewer will be started on another machine within the same IP subnet of the PC that runs go2MONITOR.

The following picture illustrates the setup:

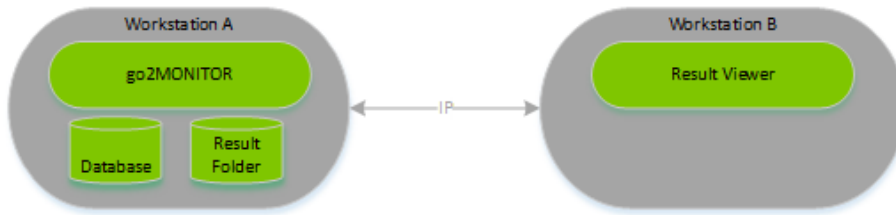


Figure 1: ResultViewer Setup

Workstation A will start go2MONITOR including the database and the result folder. In the following we assume that USER A is using workstation A and USER B is using workstation B. Workstation A uses IP A and workstations B uses IP B to communicate with each other.

## 1.2. Corresponding Files

File	Location	Description
resultviewerapp.exe	go2MONITOR application folder	The ResultViewer application
pg_hba.conf	database folder within the go2SIGNALS user folder	The PostgreSQL access configuration
postgresql.conf	database folder within the go2SIGNALS user folder	The PostgreSQL configuration file

Table 1: Corresponding Files

## 1.3. How to Read this Manual

Paths or file content is displayed in `typewriter font`.

Any pattern enclosed in “angle bracket # hyphen” `<#-PATTERN TO REPLACE-#>` must be replaced with the individual value of your configuration (e.g. IP address).

### Requirements

- go2MONITOR is installed on both workstations. On Workstation A, a standard go2MONITOR license is used allowing all system functions. On Workstation B, a license for ResultViewer only is used.
- Firewall is deactivated on both workstations – at least for the used ports.
- Knowledge about
  - go2MONITOR knowledge (Basic Training recommended)
  - Windows administration
    - \* Sharing UNC
    - \* Firewall
    - \* Installation
    - \* other
  - IP Subnets
  - Using text editors
  - Using file system

### Restrictions

- go2MONITOR and the Result Viewer must have the same version number.
- The ResultViewer must be within the same IP Subnet in the same LAN.
- go2MONITOR and the database are started and stopped separately. Therefore, the Result Viewer will only work if go2MONITOR is running.

## 2. Steps

### 2.1. Share the Result Folder

Result storage directory of the go2MONITOR (for example

`C:\Users\<#-USER A-#\go2SIGNALS\go2MONITOR\results` on Workstation A) must be visible for USER B on Workstation B using ResultViewer.

Result storage path must be mounted on Workstation B by using drive letter (e.g. Y:\results) or a fully qualified UNC path (e.g. \\192.168.0.7\storage). Test if you can read and write from Workstation B in result storage. That path must be entered in the corresponding connection dialog in the ResultViewer.

### 2.2. Allow PostgreSQL Database to accept connections from Remote Hosts

Stop go2MONITOR if running.

Allow PostgreSQL to be accessed by remote hosts. Open the file...

`C:\Users\<#-USER A-#\go2SIGNALS\go2MONITOR\database\pg_hba.conf`

... in an editor and locate the line ...

```
host all all 127.0.0.1/32 trust
```

... below this line add a new line ...

```
host all all 0.0.0.0/0 trust
```

Open the file...

`C:\Users\<#-USER A-#\go2SIGNALS\go2MONITOR\database\postgresql.conf`

... in an editor and locate the line ...

```
#listen_addresses = 'localhost' # what IP address(es) to listen on;
```

... replace the lines ...

```
listen_addresses = '*' # what IP address(es) to listen on;
```

Start go2MONITOR and test if it writes results to the database and if the integrated ResultViewer is still working correctly.

### 2.3. Configure the Firewall

Deactivate firewall on both workstations or configure the firewalls on both workstations that it allows windows file share and PostgreSQL (PostgreSQL uses port 39115 for remote connections).

## 2.4. Configure ResultViewer on Remote Site

Start ResultViewer on workstation B by using a corresponding Start menu icon. Assure that you got the right license for a standalone ResultViewer.

If you are starting ResultViewer for the first time, and connection parameters are not yet configured, ResultViewer will open its dialog to enter connection parameters for the go2MONITOR and database.

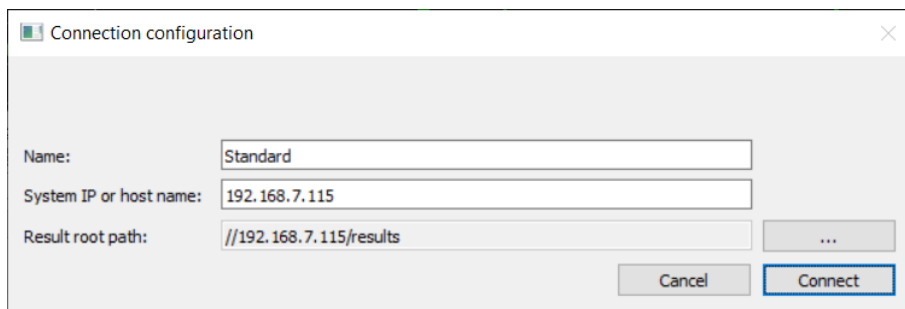


Figure 2: ResultViewer Connection Configuration

Enter the IP-address of the go2MONITOR and the path to the result storage and finally press connect. If connection is not possible, please contact your system administrator.



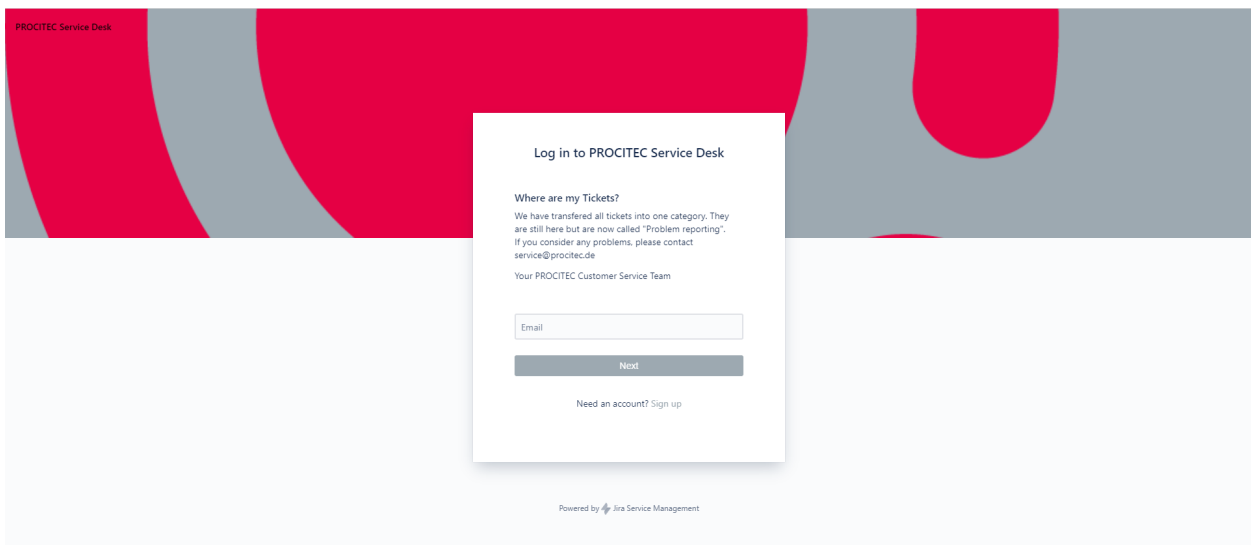
## A. Support

### Requests and suggestions?

All requests or suggestions regarding our go2signals product-range are very much appreciated; we would be delighted to hear from you.

### Any questions? We are happy to assist you!

If you have any further questions, please do not hesitate to contact our Support Team for rapid assistance – just raise a service request at: <http://servicedesk.procitec.com>.



PROCITEC GmbH  
Rastatter Straße 41  
D-75179 Pforzheim  
Phone: +49 7231 15561 0  
Web: [www.procitec.com](http://www.procitec.com)  
Email: [service@procitec.com](mailto:service@procitec.com)