



Instruction Manual

go2MONITOR Operator Setup

Product Version v24.1

December 21, 2023

Imprint

PROCITEC GmbH
Rastatter Straße 41
D-75179 Pforzheim
Germany

Phone: +49 7231 15561 0
Fax: +49 7231 15561 11
Email: service@procitec.com
Web: www.procitec.com

Authorised Representative:
Dipl.-Ing. (FH) Dipl.-Inf. (FH) Jens Heyen

Registration Court:
HRB 504702 Amtsgericht Mannheim
Tax ID:
DE 203 881 534

Document ID:
PROCITEC-IMA-OperatorSetup_E-7f142bd669

All product names mentioned in this text are trademarks or registered trademarks of the respective title-holders.

© 2023 PROCITEC GmbH

All content, texts, graphics and images are copy-righted by PROCITEC GmbH, if not stated otherwise. Reproduction in any form, the rights of translation, processing, duplication, modification, use and distribution by use of electronic systems in whole or part are strictly prohibited.

Subject to technical modifications.

Contents

- 1. go2MONITOR Operator 1
 - 1.1. Task 1
 - 1.2. Corresponding Files 1
 - 1.3. How to Read this Manual 2

- 2. Steps 3
 - 2.1. Share the Result Folder 3
 - 2.2. Allow PostgreSQL Database to accept connections from Remote Hosts 3
 - 2.3. Configure the Firewall 4
 - 2.4. Configure go2MONITOR Operator on Remote Site 4

- A. Support 5

1. go2MONITOR Operator

The go2MONITOR Operator is a special running mode of the application that allows the go2MONITOR user to access to an other running go2MONITOR application. It is usually started within go2MONITOR. Beside the integrated version of the user interface from go2MONITOR there is an operator version (go2MONITOR Operator) with limited functionality that can be used remotely from another workstation. A license is required for use. The differences between the two versions are described in the user manual. This document describes the process to configure it.

1.1. Task

An Integrator or Administrator of go2MONITOR wants to make the go2MONITOR Operator available in parallel to go2MONITOR. The go2MONITOR Operator will be started on another machine within the same IP subnet of the PC that runs go2MONITOR.

The following picture illustrates the setup:

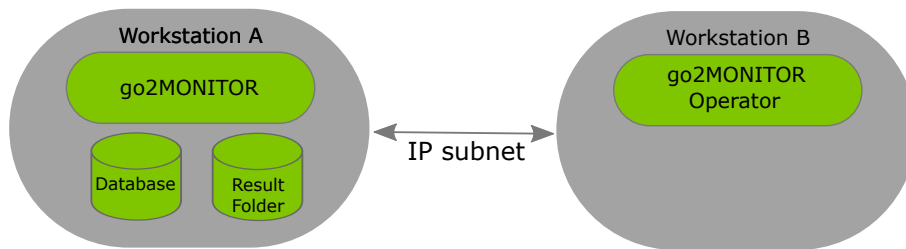


Figure 1: Operator Setup

Workstation A will start go2MONITOR including the database and the result folder. In the following we assume that USER A is using workstation A and USER B is using workstation B. Workstation A uses IP A and workstations B uses IP B to communicate with each other.

1.2. Corresponding Files

File	Location	Description
go2monitor-operator.conf	go2MONITOR user folder	go2MONITOR operator configuration file
pg_hba.conf	database folder within the go2SINGNALS user folder	The PostgreSQL access configuration
postgresql.conf	database folder within the go2SINGNALS user folder	The PostgreSQL configuration file

Table 1: Corresponding Files

1.3. How to Read this Manual

Paths or file content is displayed in `typewriter font`.

Any pattern enclosed in “angle bracket # hyphen” `<#-PATTERN TO REPLACE-#>` must be replaced with the individual value of your configuration (e.g. IP address).

Requirements

- go2MONITOR is installed on both workstations. On Workstation A, a standard go2MONITOR license is used allowing all system functions. On Workstation B, a license for Operator only is used.
- Firewall is deactivated on both workstations – at least for the used ports.
- Knowledge about
 - go2MONITOR knowledge (Basic Training recommended)
 - Windows administration
 - * Sharing UNC
 - * Firewall
 - * Installation
 - * other
 - IP Subnets
 - Using text editors
 - Using file system

Restrictions

- go2MONITOR and the go2MONITOR Operator mode must have the same version number.
- The go2MONITOR Operator must be within the same IP Subnet in the same LAN.
- go2MONITOR and the database are started and stopped separately. Therefore, the go2MONITOR Operator will only work if go2MONITOR is running.

2. Steps

2.1. Share the Result Folder

Result storage directory of the go2MONITOR (for example for Windows

`C:\Users\<#-USER A-#>\go2SIGNALS\go2MONITOR\results` on Workstation A) must be visible for USER B on Workstation B using go2MONITOR Operator.

Result storage path must be mounted on Workstation B by using drive letter (e.g. Y:\results) or a fully qualified UNC path (e.g. \\192.168.0.7\storage). Test if you can read and write from Workstation B in result storage. That path must be entered in the corresponding connection dialog in the go2MONITOR Operator.

2.2. Allow PostgreSQL Database to accept connections from Remote Hosts

Stop go2MONITOR if running, make sure that the database processes are also stopped.

Allow PostgreSQL to be accessed by remote hosts. Open the file

`C:\Users\<#-USER A-#>\go2SIGNALS\go2MONITOR\database\pg_hba.conf` (Windows)

in an editor and locate the line

```
host all all 127.0.0.1/32 trust
```

add the following line below located line

```
host all all 0.0.0.0/0 trust
```

Open the file

`C:\Users\<#-USER A-#>\go2SIGNALS\go2MONITOR\database\postgresql.conf`

in an editor and locate the line

```
#listen_addresses = 'localhost' # what IP address(es) to listen on;
```

replace with the line

```
listen_addresses = '*' # what IP address(es) to listen on;
```

Start go2MONITOR and test if it writes results to the database and if the integrated ResultViewer is still working correctly.

For Linux the files are:

`/home/<#-USER A-#>/pro_database/pg_hba.conf`

and

```
/home/<#-USER A-#>/pro_database/postgresql.conf
```

2.3. Configure the Firewall

Deactivate firewall on both workstations or configure the firewalls on both workstations that it allows windows file share and PostgreSQL (PostgreSQL uses port 39115 for remote connections).

2.4. Configure go2MONITOR Operator on Remote Site

Start go2MONITOR Operator on workstation B by using a corresponding Start menu icon or script file as listed in chapter Corresponding Files. Assure that you got the right go2MONITOR Operator license.

If you are starting go2MONITOR Operator for the first time, and connection parameters are not yet configured, go2MONITOR Operator will open its dialog to enter connection parameters for the go2MONITOR and database.

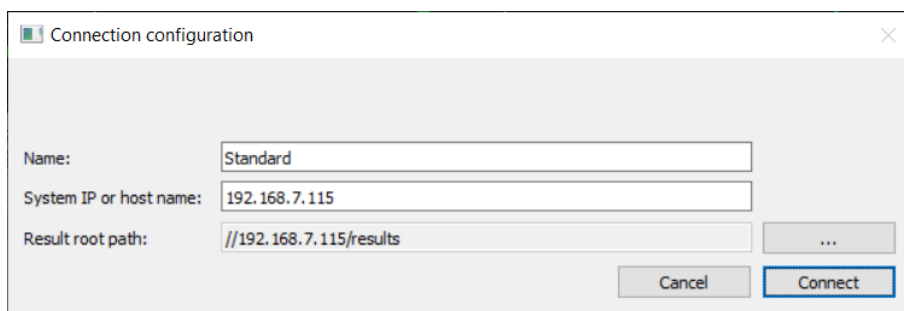


Figure 2: go2MONITOR Operator Connection Configuration

Enter the IP-address of the go2MONITOR and the path to the result storage and finally press connect.

If files should be playable from the client go2MONITOR needs to know the go2MONITOR Operator clients network address seen by go2MONITOR. There is an automatism which tries to determine the correct clients network address.

If local file playback is not working you have to configure the clients network address in the file go2monitor-operator.conf in the user directory. The keys "FilePlaybackIPAddress" value needs to be set to the clients network address.

```
<add key='`FilePlaybackIPAddress`' value='`Client.IP.in.network`' />
```

If connection is not possible, please contact your system administrator.

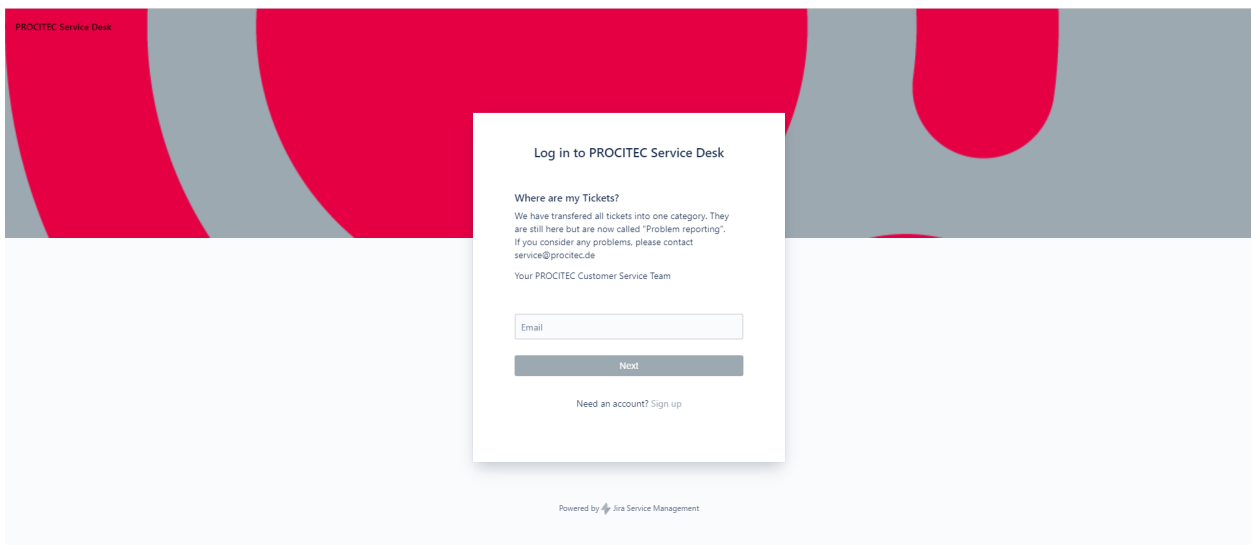
A. Support

Requests and suggestions?

All requests or suggestions regarding our go2signals product-range are very much appreciated; we would be delighted to hear from you.

Any questions? We are happy to assist you!

If you have any further questions, please do not hesitate to contact our Support Team for rapid assistance – just raise a service request at: <http://servicedesk.procitec.com>.



PROCITEC GmbH
Rastatter Straße 41
D-75179 Pforzheim
Phone: +49 7231 15561 0
Web: www.procitec.com
Email: service@procitec.com